



# Moving Day

An easy read guide





There are lots of things to do once you have a date to move into your house or flat.



You could start by packing some bits and pieces that you won't need every day like books and ornaments.



Make sure you have plenty of strong boxes in different sizes.

You can buy them or ask friends and family if they have any.



Pack up rooms together and label the boxes like kitchen and bedroom.

It makes it much easier on moving day. You can put the boxes straight in each room.



Ask friends and family if they can help you on moving day.

The more help you have the faster and easier you can get it done.



You could get a removal company or hire a van if you have lots of big stuff.

Remember you will have to pay for them though.



You might find that you can get all your stuff in a big car, or do a few trips in a smaller car.

You could also ask friends that might have vans if they could help.



Try to have packed up most of your things before moving day.

You can then start moving stuff as soon as you have the keys to your new home.



Move the big stuff first like beds, fridges and wardrobes.

You will then be able to unpack things straight in to them.



You will probably be very tired by the end of the day so make sure you have made your bed up so you can just fall into it.



If you have labelled all your boxes it should be easy to put them in each room.



Ask a friend or family member if they can start to unpack boxes while you are moving the big stuff.





Make sure your kettle and mugs are easy to find so you can have a cuppa!



It is a good idea to buy something that is quick to make for tea or you could just get a takeaway if there is one nearby.



If you have a lot of stuff it might take you a while to unpack everything.

Try to do the stuff you need every day first and leave the other things until later.



You might find that you move your furniture round a lot until it looks right.

It can take weeks before you feel settled and have your home just how you want it.

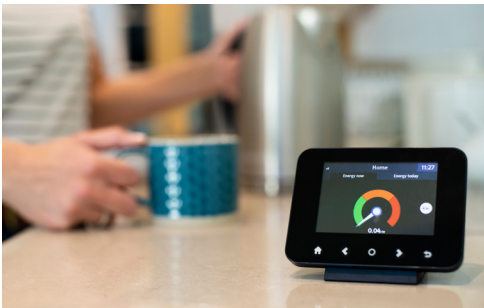


You will need to get all the bills for the house put in your name.

You will need to contact the gas, electricity, water and tell them your details.



You also need to tell other people like broadband, sky or cable and so on if you have them.



The gas and electricity company will ask you for a meter reading.

It's easy if you know where the meter is. Ask the landlord to tell you.



You must also contact your local council to have your name put on the council tax bill and the electoral register so you can vote.

Here are some useful questions to ask before you move into your new home:



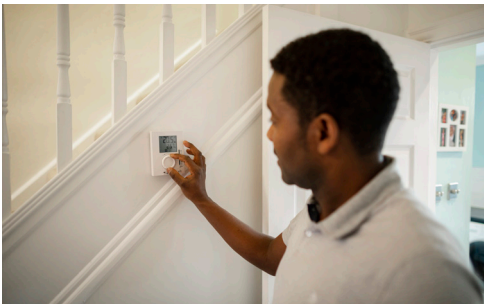
Where is the main stopcock to turn off the water?



Where are the gas and electricity meters?



What day are the bins emptied?



Where is the thermostat for the heating?



Once you have moved you will need to tell people your new address. Here are a few ideas of people you need to tell:



Family and friends



Doctor



Dentist



Bank



Employer



Benefit office



School



TV Licensing



For more accessible information on a broad range of subjects please contact

**btm**

the home of accessible information



11-12 Eldon Place

Bradford BD1 3AZ

Telephone: 01274 848150

SMS / Text: 07535 120222

E-mail: [enquiries@btm.org.uk](mailto:enquiries@btm.org.uk)

BTM produces accessible information in a range of formats such as British Sign Language, easy read, audio, video, illustration and animation to help people understand the world around them.

Please visit [www.btm.org.uk](http://www.btm.org.uk) for all our easy read booklets and other accessible media productions.

Or visit [www.btmprojects.com](http://www.btmprojects.com) to access the work made by our workgroups.

©btm 2021 and images under licence from  
[www.gettyimages.co.uk](http://www.gettyimages.co.uk) & [www.photosymbols.com](http://www.photosymbols.com) Version250121

The information in this booklet is for guidance only.

Whilst we have made every attempt to ensure that the information has come from reliable sources, BTM are not responsible for any errors or omissions, or for any results obtained from the use of this information.